

PART N 1/2 SEC. 33. T7N. R1W. S.L.B. & M.  
**NATHAN BARKER SUBDIVISION PHASE 1**

158

NORTH OGDEN CITY

TAXING UNIT: 10

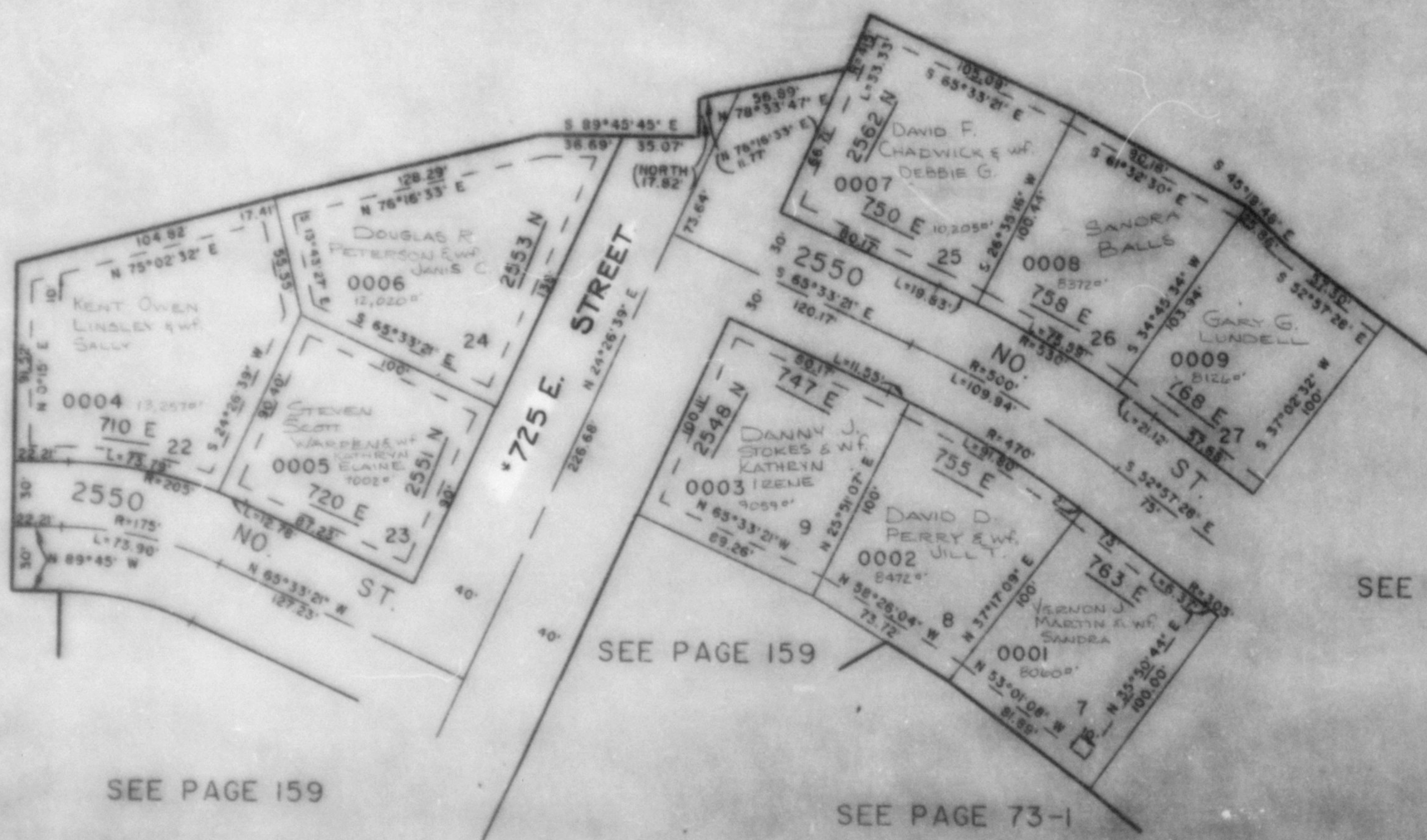
SCALE 1" TO 50'

PREFIX: 17-158

EXCEPT WHERE OTHERWISE SHOWN  
 ALL LOTS OWNED BY  
 LYNN C. HUIBROOK

SEE PAGE 74

SEE BK 18 PG 42



SEE PAGE 157

SEE PAGE 159

SEE PAGE 73-1

SEE PAGE 159

7' UTILITY AND DRAINAGE EASEMENTS  
 EACH SIDE OF PROPERTY LINE AS  
 INDICATED BY DASHED LINES  
 EXCEPT AS OTHERWISE SHOWN

FOR COMPLETE EME DATA  
 SEE ORIG. UND. PLAT IN  
 BOOK 27, PAGE 96  
 \* MONROE BLVD. CHANGED  
 TO 725 EAST STREET  
 11-15-87  
 (BK. 1529, PG. 1497, 21-87)